



# MASTER LEDtube EM/ Mains

## MASTER LEDtube EM/ Mains

MAS LEDtube 1200mm UO 18W 840 T8 RN

The Philips MASTER LEDtube integrates a LED light source into a traditional fluorescent form factor. Its unique design creates a perfectly uniform visual appearance which cannot be distinguished from traditional fluorescent. For those that are looking for value for money within limited budget and re-lamping efforts for better light effect and lifetime. The Philips MASTER LEDtube integrates a LED light source into a traditional fluorescent form factor. Its unique design creates a perfectly uniform visual appearance which cannot be distinguished from traditional fluorescent. For those that are looking for value for money within limited budget and re-lamping efforts for better light effect and lifetime.

### Product data

#### • General Information

|                        |                                      |
|------------------------|--------------------------------------|
| Cap-Base               | G13 [ G13 Medium Bi-Pin Fluorescent] |
| Main Application       | Industrial                           |
| Nominal Lifetime (Nom) | 50000 h                              |
| Switching Cycle B50L70 | 200000X<br>50000                     |

#### • Light Technical

|                                    |                           |
|------------------------------------|---------------------------|
| Color Code                         | 840 [ CCT of 4000K (841)] |
| Beam Angle (Nom)                   | 160 °                     |
| Luminous Flux (Nom)                | 2500 lm                   |
| Luminous Flux (Rated) (Nom)        | 2500 lm                   |
| Rated Beam Angle                   | 160 °                     |
| Correlated Color Temperature (Nom) | 4000 K                    |
| Luminous Efficacy (rated) (Nom)    | 139 lm/W                  |
| Color Consistency                  | 6 steps                   |
| Color Rendering Index (Nom)        | 83                        |

|                                       |      |
|---------------------------------------|------|
| LLMF At End Of Nominal Lifetime (Nom) | 70 % |
|---------------------------------------|------|

#### • Operating and Electrical

|                                 |             |
|---------------------------------|-------------|
| Input Frequency                 | 50 to 60 Hz |
| Power (Rated) (Nom)             | 18 W        |
| Lamp Current (Max)              | 82 mA       |
| Lamp Current (Min)              | 75 mA       |
| Starting Time (Nom)             | 0.5 s       |
| Warm Up Time To 60% Light (Nom) | 0.1 s       |
| Power Factor (Nom)              | 0.9         |
| Voltage (Nom)                   | 220-240 V   |

#### • Temperature

|                      |        |
|----------------------|--------|
| T-Ambient (Max)      | 35 °C  |
| T-Ambient (Min)      | -20 °C |
| T-Storage (Max)      | 65 °C  |
| T-Storage (Min)      | -40 °C |
| T-Case Maximum (Nom) | 55 °C  |

# PHILIPS

# MASTER LEDtube EM/Mains

## • Controls and Dimming

Dimmable No

## • Mechanical and Housing

Product Length 1200 mm

## • Approval and Application

Energy Saving Product Yes  
 Suitable For Accent Lighting No  
 Energy Efficiency Label (EEL) A++  
 Approval Marks CE marking  
 KEMA Keur certificate

Energy Consumption kWh/1000 h  
 RoHS compliance 18 kWh

## • Product Data

Full product code 871869656529200  
 Order product name MAS LEDtube 1200mm UO 18W 840 T8 RN  
 EAN/UPC - Product 8718696565292  
 Order code 929001222002  
 Numerator - Quantity Per Pack 1  
 Numerator - Packs per outer box 10  
 Material Nr. (12NC) 929001222002  
 Net Weight (Piece) 0.270 kg

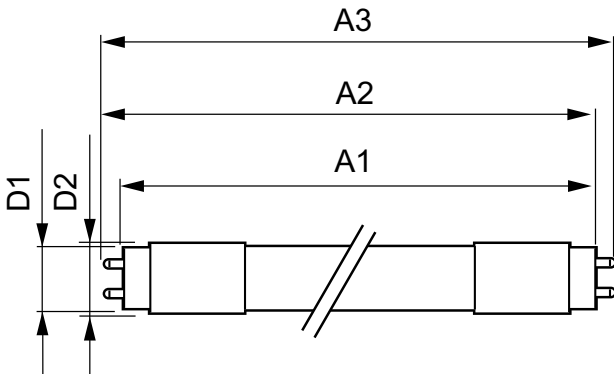
## Warnings and Safety

• NOTES: The overall energy efficiency and light distribution of any installation that uses these lamps are determined by the design of the installation.

## Warnings and Safety

• NOTES: The overall energy efficiency and light distribution of any installation that uses these lamps are determined by the design of the installation.

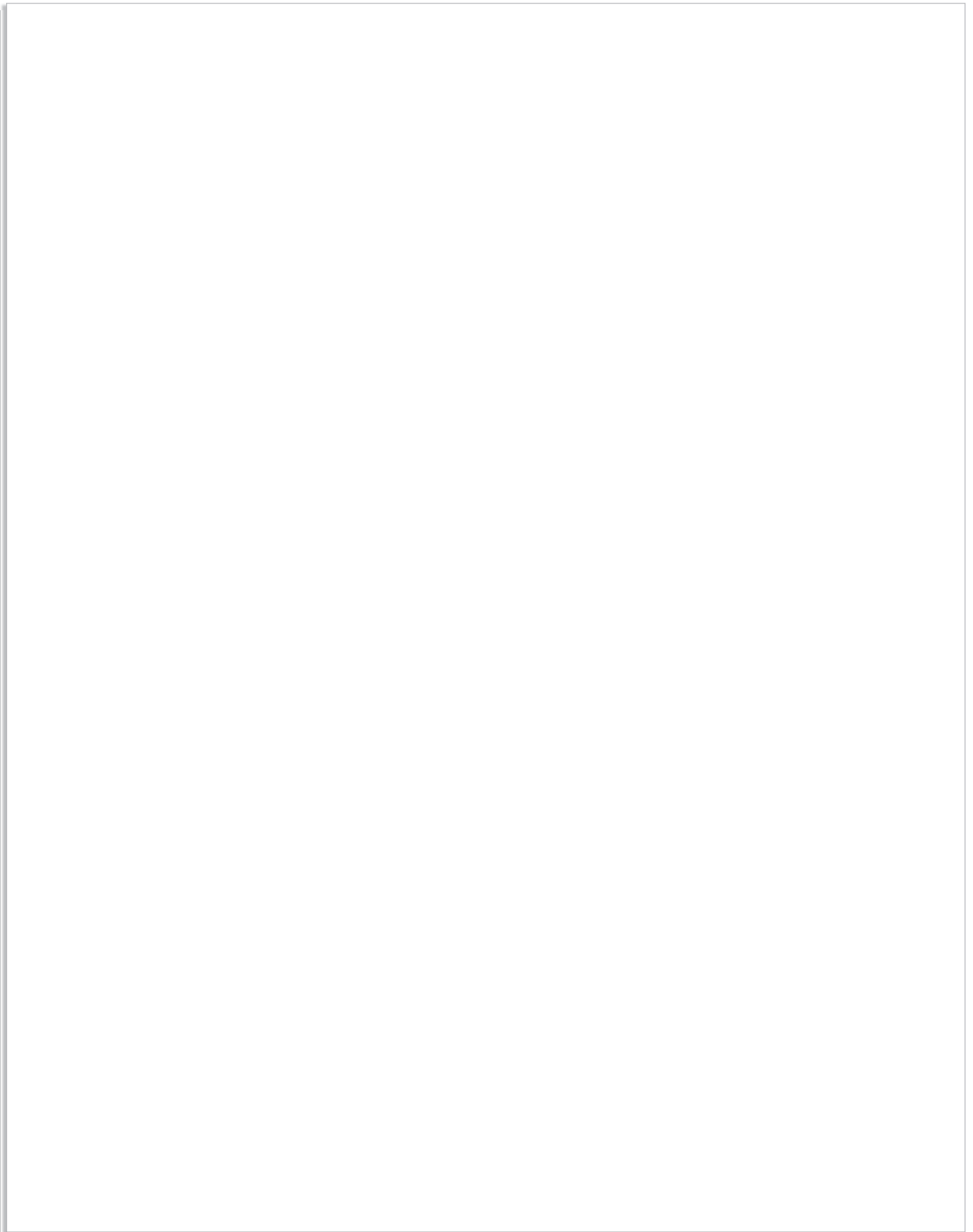
## Dimensional drawing

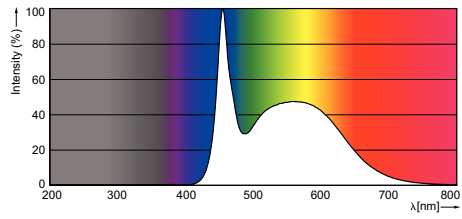


## TLED 4ft 220-240V 18W-36W 4000K G13 ND

| Product                             | D1       | D2    | A1       | A2        | A3        |
|-------------------------------------|----------|-------|----------|-----------|-----------|
| MAS LEDtube 1200mm UO 18W 840 T8 RN | 25.78 mm | 28 mm | 588.6 mm | 1205.3 mm | 1212.4 mm |

Photometric data





© 2016 Philips Lighting Holding B.V.  
All rights reserved.

Specifications are subject to change without notice. Trademarks are the property of Koninklijke Philips N.V. (Royal Philips) or their respective owners.

[www.philips.com/lighting](http://www.philips.com/lighting)

2016, June 7  
data subject to change