

## HMI

Metal halide lamps, double-ended

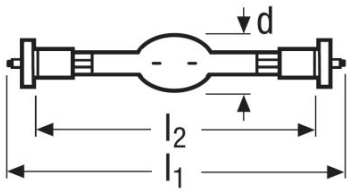


### Product family features

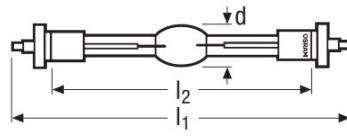
- Color temperature: approx. 6,000 K (Daylight)
- High color rendering index:  $R_a >$
- Incredibly bright with luminous flux up to 2.3 million lumen
- Very high luminous efficacy up to 100 lm/W
- Robust design with eXtreme Seal (XS) technology, allowing up to 450°C at the pinch seal
- Hot restart capability



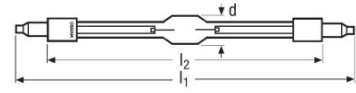
# Product family datasheet



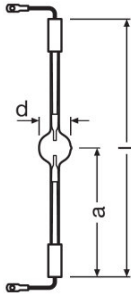
Product line drawing



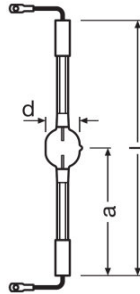
Product line drawing



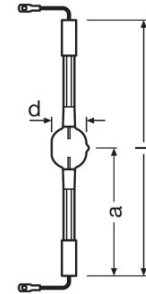
Product line drawing



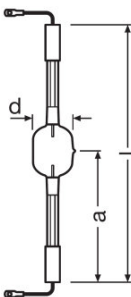
Product line drawing



Product line drawing



Product line drawing



Product line drawing

## Product family datasheet

### Technical data

| Product description  | Electrical data |                 | Photometrical data    |                   |                          | Dimensions & weight |          |                 |                                             | Lifespan | Additional product data     |
|----------------------|-----------------|-----------------|-----------------------|-------------------|--------------------------|---------------------|----------|-----------------|---------------------------------------------|----------|-----------------------------|
|                      | Nominal voltage | Nominal current | Nominal luminous flux | Color temperature | Color rendering index Ra | Diameter            | Length   | Mounting length | Length with base excl. base pins/connection | Lifespan | Base (standard designation) |
| HMI 575 W/DXS        | 95.0 V          | 7 A             | 49000 lm              | 6000 K            | 90                       | 21.0 mm             | 135.0 mm | 115.0 mm        | 115.00 mm                                   | 1000 h   | SFc10-4                     |
| HMI 1200 W/DXS       | 100 V           | 13.8 A          |                       | 6000 K            | > 90                     | 27.0 mm             | 220.0 mm | 180.0 mm        | 180.00 mm                                   | 1000 h   | SFc15.5                     |
| HMI 2500 W/S XS      | 115 V           | 25.6 A          | 240000 lm             | 6000 K            | 90                       | 31.5 mm             | 210.0 mm | 150.0 mm        | 150.00 mm                                   | 500 h    | SFa21-12                    |
| HMI 2500 W/DXS       | 115 V           |                 | 240000 lm             | 6000 K            | 90                       | 31.5 mm             | 355.0 mm | 290.0 mm        | 290.00 mm                                   | 500 h    | SFa21                       |
| HMI 4000 W/DXS       | 200 V           |                 | 380000 lm             | 6000 K            | 90                       | 36.0 mm             | 405.0 mm | 340.0 mm        | 340.00 mm                                   | 500 h    | SFa21                       |
| HMI 4000 W/DXS SOLAR | 204 V           | 23.5 A          |                       | 6000 K            | > 90                     | 36.0 mm             | 405.0 mm |                 | 340.00 mm                                   | 500 h    | SFa21-12                    |
| HMI 6000 W/DXS       |                 | 55.0 A          | 570000 lm             | 6000 K            | 90                       | 54.0 mm             | 450.0 mm |                 |                                             | 500 h    | S25.5                       |
| HMI 12000 W/DXS      | 240 V           | 84.0 A          | 150000 lm             | 6000 K            | 90                       | 64.0 mm             | 470.0 mm |                 |                                             | 500 h    | S30                         |
| HMI 18000 W/DXS      | 380 V           |                 | 1700000 lm            | 6000 K            | > 90                     | 70.0 mm             | 500.0 mm |                 |                                             | 500 h    | S30                         |
| HMI 24000 W/DXS      | 280 V           |                 | 300000 lm             | 6000 K            | 90                       | 83.0 mm             | 1000 mm  |                 |                                             | 500 h    | S30                         |

## Product family datasheet

| Product description  | Capabilities     | Certificates & standards |
|----------------------|------------------|--------------------------|
|                      | Burning position | EEI – Energy Label       |
| HMI 575 W/DXS        | Any              | B                        |
| HMI 1200 W/DXS       | Any              | B                        |
| HMI 2500 W/S XS      | Other            | B                        |
| HMI 2500 W/DXS       | Other            | B                        |
| HMI 4000 W/DXS       | p15              | B                        |
| HMI 4000 W/DXS SOLAR | p15              |                          |
| HMI 6000 W/DXS       | p15              | B                        |
| HMI 12000 W/DXS      | p15              | B                        |
| HMI 18000 W/DXS      | p15              | B                        |
| HMI 24000 W/DXS      | p15              | B                        |

## Product family datasheet

---

### Safety advice

Because of their high luminance, UV radiation and high internal pressure during operation, HMI lamps may only be operated in enclosed lamp casings specially constructed for the purpose. Appropriate filters must ensure that UV radiation is reduced to an acceptable level. Mercury is released if the lamp breaks. Special safety precautions must be taken. Information on safety and handling is available on request or can be found in the leaflet included with the lamp or in the operating instructions.

---

### Application advice

For more detailed application information and graphics please see product datasheet.

---

### Disclaimer

Subject to change without notice. Errors and omission excepted. Always make sure to use the most recent release.